

# Historical Shore *VIEWS*

www.shoreviewhistoricalsociety.org

Shoreview's 61st Year

'preserving today's history for tomorrow'

July 2018

## From the President

### Saying Goodbye

One of the hardest parts of growing up is realizing that things don't stay the same.

As a preteen, I remembered shopping at a variety



store on County Rd. E and Rice St. What treasures that store seemed to have.

However, one day it closed and now there is a gas station on that corner.

All of the stores I shopped at in Shoreview are gone, (continued on page 4)

## SHS to Move to Historic Larson Home

SHS is moving into its new home, the former Larson farm home near County Road I and Lexington Ave.

The city sent a letter of agreement in June for SHS to become a tenant of the historic home and the SHS is planning on moving its materials and files soon to the house. "The farm house is a natural for our home," says Jacci Krebsbach, SHS president. "It reminds us of the area's early days of farm lands." The buildings were first put up in 1896.

Art Larson, the farm's last owner passed away in 1999, having lived in the home for 65 years. He had remarked he hoped the place would continue on as part of the city's landscape and not be a part of another housing development. The site has about two acres and also includes on the east lawn Guerin's restored historical gas station. (continued on page 2)

### See Us at the Slice July 27-29

Be sure and stop by and visit at the SHS booth at the Slice of Shoreview held at Island Lake Park, July 27- 29

This year the booth will feature a photographic timeline, from the early settlers' days up to 1991, the beginning of SHS. Members or friends who would like to help staff the booth may call Bob Minton, 651-295-1404.

## Lundbergs Celebrate As SHS Heritage Family of 2018



Marianne Lundberg Kulka, (left to right) Bonnie Lysons and Michelle Lundberg Reichow read from a family history book. Lysons came from Ontario to part of the family get-together. Several family members from outside the Twin Cities also attended.

A rich and bountiful history of the Sven and Charlotte Lundberg family and its descendants from 1906 to the present was the treat for SHS members in saluting its Heritage Family of 2018 in April.

Michelle Lundberg Reichow and sister Marianne, and other relatives, told the story of their great-great-grandparents who settled on a farm near Snail Lake and whose home stayed in the family up to 1978.

An information-packed power point presentation provided many family photos and maps of the area; a special tablecloth owned by grandmother Elovera Lundberg, was on display with the (continued on page 3)



Many Lundberg family members gathered for a picture with the SHS commemorative plaque which carries the family name and is now on display at Shoreview City Hall. SHS President Jacci Krebsbach makes presentation to Marianne Lundberg Kulka.

**At the SHS Annual Meeting  
Busy Year Marked by SHS  
Membership Campaign,  
Potential New Home**

Another busy year for the SHS was noted at its annual meeting in April.

President Jacci Krebsbach provided a brief overview of the organization's status, noting the year's highlights of membership programming, a new member-



ship drive and a possible new home

for SHS.

SHS continues to work to bring meaningful membership programs, she said, including the past year's topics on architect Cass Gilbert and local artist John Cartwright.

Communications-wise she directed attention to the SHS website, growing in what its offering viewers.

The SHS directed a new membership drive during the past quarter and showed some positive results. Somewhat related was a first-time event---a free breakfast for SHS members at Perkin's restaurant. "Be on the alert, to sign-up for the next one," she urged.

SHS continued working with the city in becoming a tenant in the vacant LePak/Larson historic farm home in north Shoreview.

Also at the meeting, three incumbent directors--- Carol Gross, Jacci Krebsbach and Bob Minton---were re-elected

**Shoreview Community Foundation Presents \$5,000 Grant for Help in Planning Use of Larson Home**

The Shoreview Community Foundation (SVCF) has provided a joint grant of \$5,000 to the SHS and City of Shoreview to assist in arranging the appropriate launching of its new residence, the historic Larson farm home in north Shoreview.

The expected City Council approval to grant the SHS as a tenant is pending. The launching might include strategic preparations to plan having the home as a site for touring groups and perhaps other educational uses. Minnesota Historical Society may provide early guidance.

"We are thankful for the Foundation's grant," said SHS President Jacci Krebsbach. "The SHS is in an important part of its growth and some exciting times ahead. Many opportunities lie before of us."

The SVCF has helped the SHS before, providing \$1,200 in a special 2017 project that resulted in multiple-historical photographs in the new Shoreview Library. In that regard, Krebsbach welcomes input from SHS members and others on ways the building can be best utilized in its new role.

Many other local historical societies in Ramsey County are building tenants or own their building outright.

---

**SHS in Historic Farm Home---continued**

A year ago, the City of Shoreview invited SHS along with the other city's volunteer groups---Northern Lights Band, Gallery 96, etc.--- to tour of the vacant facility to determine which of them might utilize any parts of the building for their activities. Only the SHS felt the farm home site would work well with its needs.

Over the years, SHS has held several functions on the premises, including the nearby installation of the old Guerin gas station. The station once was on Rice St. near Owasso Blvd. in the 1920s through the 1970s.



Since the SHS's founding in 1991, materials and records have been maintained and stored in numerous sites; the Larson home will help solidify and centralize the group's various programs, and, with the added visibility, be an aid to building membership

Following his move to the farm in 1935, Larson later sold several parcels of the 130 acre property. Land to the south of the home across County Rd. J is part of the former Twin Cities Ammunition Plant.

The city acquired the land after Art's death and brought the building up to code. In 2002 it restored the yellow Chaska brick home, applying special wood shingles to the roof, the type used when the home was first built. The interior floors were re-sanded and special tile was laid in some rooms. Later that year, the Housing Resource Agency moved to the building.

The two-story building is reminiscent of the area's farm homes, with a kitchen, dining room and parlor on the main floor with the bedrooms upstairs. The original home had an out house. More about the home in future articles. The home is among the stopping points on the SHS Heritage Trail throughout the city.

## SHS Gifted Lakeside History

### Early Turtle Lake Farm History Recorded

The SHS loves what Tim Donohoe did a few years back. He carefully documented the land his great uncle Jim Crosson, an Ohio native, purchased from Frank Schifsky along Turtle Lake's western shore back in 1903, tracing its development and ownership up to present day.

Subsequently, the land was divided up for summer cottages and eventually to year-around residences. The land had approximately 1500 feet along the lakeshore, to 850 feet west of the lake to what became Lexington Ave. Not a farmer by trade, Crosson used the land as a hunting spot and eventually a home and a large garden and two apple orchards.

Over the years, the land was passed down by family members and many eventually sold their share. The land now covers residences from 5050 to 5154 Lexington Ave.

Tim, who now resides in Hugo and was along time postal worker in New Brighton, as recorded much the homes' ownership over the years to include new and old building teardowns, accompanied by photos. He spent several years on-and-off on the project, knowing much of his research first hand as he his youth as lakeshore resident with his family.



**Jim Crosson, 1846-1939**

Tim's record includes his own numerous sketches of Crosson's original farm buildings. He put it all into 36 pages in a three-ring binder and recently gifted a copy to the SHS. What a fine treasure for the SHS which continually works to discover more about its community history.

Crosson, who moved to St. Paul in 1885 at age 39, was a coal broker and an outdoor enthusiast who eventually found the Turtle Lake area, first building a one-room cabin in 1904. He married Mary Ellen Phelen in 1908 and they decided to move to the lake.

He later built four summer time cottages on the lake about 1915. The Crosson home at 5124 Lexington Ave. still stands. "When I was a kid, Turtle Lake as a great place to grow up," writes Donohoe in his research. "It was a place of open spaces and fresh air.

"In the summer we'd spend the whole day in the lake. It wasn't uncommon to find 20 or 30 kids in the water at the Lexicon Beach."

## Checking for Names & Autographs



Heritage Family Celebration attendees looked over grandmother Elovera Lundberg's tablecloth she used decades ago when she often had guests for dinner, and they were invited to autograph the cloth; many found some names from Shoreview's past. The cloth has never been laundered for fear of losing the autographs.

### Heritage family---continued

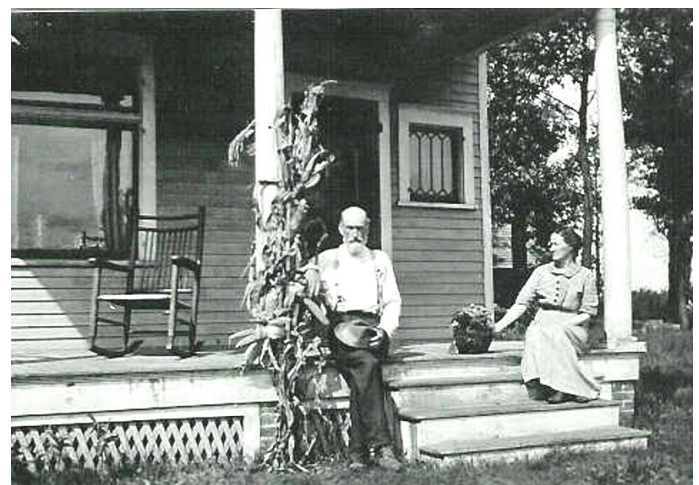
autographs of the many who ate meals at her home.

Michelle traced when Sven and Charlotte moved from their Northfield farm in central Minnesota to the Snail Lake area, now known as Harbor Place. They raised eight children and the land would be home for six generations. They had originally immigrated from Sweden in 1869,

Lundberg family members will be on the SHS float in the Slice of Shoreview parade.

The Lundberg family was the 13th family with Shoreview roots to be honored by the SHS.

**Jim and Mary Crosson relax on their Turtle Lake home's porch in this photo taken around 1910. Photos provided by Jim Donohoe.**



**SHOREVIEW HISTORICAL SOCIETY**  
MEMBERSHIP DUES  
AND DUES RENEWAL FORM



**Mike Cunningham, above, and SHS President Jacci Krebsbach gave a special presentation earlier this year to residents of Applewood Pointe in Shoreview about the history of Shoreview, dating from 1837 to 1991, SHS's birthday year. Parts of the presentation will be used at the SHS booth at the Slice of Shoreview, July 27-29. Photo by Carol Gross.**

**Saying Goodbye---continued**

and the school I went to in first grade, Wilbur Lake, is no more. The Shoreview Roller Rink is gone and Lake Owasso beach, where I took Red Cross swimming lessons, is undergoing renovation. The local bars, the "beer joints" of days past, are also gone. The final one, the Vadnais Bar, will close July 28.

A former store, "The Spot", was originally located on the west side of Rice St. next to the Guerin gas station and the Guerin home. After relocation, it became a home for a time and then became the Vadnais Bar.

Although our landmarks may be gone, our memories of them remain and that's why documenting history is so important. We need to share those memories, save those photos and tell the stories to other generations. Our community is our identify and we must never forget that !

**Call the movers !**

As you can see in other parts of the newsletter, the SHS is homeless no more! As we prepare to move our offices to the upper level of the Lepak/Larson home, we are excited to finally have a public place and a public face!

Many of our file cabinets and display materials have been stored in a room at the Snail Lake School education center. This was never a work space but we are grateful that the school district allowed us to house our huge collection of "stuff".

Now, it's time to organize, sort, pack, toss ! Volunteers are Welcome !

---**Jacci Krebsbach**

**Historical ShoreViews** is published quarterly by the Shoreview Historical Society, 4600 N. Victoria St. MN 55126, for its members and friends. SHS board members are: Don Follett, Carol Gross, Jacci Krebsbach, Bob Minton, Michelle Reichow, Lu Slaten, John Vadnais and Pam Videen.

To join the society, contact Pam Videen, 4305 Parkview Court, Vadnais Heights, MN 55127. To contribute items to the newsletter, contact editor Don Follett at Tel: 651-490-7510 or email DHFCVF29@comcast.net

Name \_\_\_\_\_  
 Address \_\_\_\_\_  
 City, State, Zip \_\_\_\_\_  
 Telephone \_\_\_\_\_  
 Email address \_\_\_\_\_

(Please include your email address to receive your newsletter. This is a private list, we do not sell nor distribute.)

**Dues are:**

<b>Adult</b>	<b>\$15</b>	<b>- 3 yrs</b>	<b>--- \$38</b>
<b>Seniors</b>	<b>\$10</b>	<b>- 3 yrs</b>	<b>--- \$25</b>
<b>Student</b>	<b>\$10</b>	<b>- 3 yrs</b>	<b>--- \$25</b>
<b>Family</b>	<b>\$18</b>	<b>- 3 yrs</b>	<b>--- \$45</b>

Add \$2 to cover postage for mailing the newsletter, if you don't include an email address

Total amount \$ \_\_\_\_\_

**You may also register for membership through our web site:**

**[www.ShoreviewHistoricalsociety.org](http://www.ShoreviewHistoricalsociety.org)**

**Additional tax deductible donations are welcome.**

Please make your check out to:  
*Shoreview Historical Society, and mail to Pam Videen, 4305 Parkview Ct., Vadnais Heights, MN 55127.*

**A Historical ShoreViews subscription is included in dues.**

*The Shoreview Historical Society was born in 1991 when a group of residents took an interest in preserving and recording both the important and informal events in the city, and those that told of our city's growth and the deeds of our people. Since its inception, the society has worked to fulfill that mission. If you are interested in participating, please give any director a call.*

