

# Historical Shore *VIEWS*

www.shoreviewhistoricalsociety.org

Shoreview's 60th Year

'preserving today's history for tomorrow'

April 2017

## Annual Meeting Means Review of 2016, Election of Directors

SHS will hold its Annual Meeting at 2 p.m. Apr. 23, just prior to its salute to the Heritage Family of the year---both at the Shoreview Community Center.

SHS president Jacci Krebsbach will review the organization's activities of 2016.

In addition, two directors are up for re-election. They are Pam Videen and Don Follett, both of whom have served on the board for several years. SHS members may vote just prior to the meeting.

## Fabrics, Fashions Show of the Times Coming May 15

A special membership meeting in May will feature women's fashions and designs from the



past—with an extra look at 1957, the first year of Shoreview, now marking its 60<sup>th</sup> year in 2017.

The program will be presented at 7 p.m. May 15 at the Shoreview library. Refreshments will be served (continued on page 4)

## From the President

### We Need a Transfusion

If the Shoreview Historical Society was a body, the Board members and other leaders could possibly be considered the heart--but its members are definitely the energy and lifeblood that runs through its veins and arteries.

For an organization to continue to survive, it is critical to have a growing and committed membership. But the body SHS is in need of a transfusion of new members who will share their historical photos, stories and ideas.

(continued on page 3)

## SHS Heritage Family Celebration Apr. 23 at Community Center

The 2017 Shoreview Historical Society Heritage Family program—2 p.m. Apr. 23 at the Shoreview Community Center--- will feature descendants of Swedish immigrant Olaf Swenson.

The retired artisan and contractor built a summer home on Turtle Lake in 1913. His family became one of several who have occupied and delighted in the east shore of the lake for more than a century.

Olaf built a year-round stone house south of the first in 1930, which became the home of his granddaughter, Dr. Eva-Jane Ostergren Larson and her husband, Dr. Bert R. Larson, for 40 years.

Eva-Jane was a local physician, encouraged by her dad, Dr. Ed Ostergren and mother Eva (Olaf's daughter) to mother Eva (Olaf's daughter) to enter a field largely occupied by men at the time. She and Bert, a dentist, raised their family in the early years of Shoreview and were well known in the community.

Eva-Jane repaired more than a few lacerations on the kitchen table, adding the insult of a tetanus shot to the distressed young citizens.

The couple's son and daughter, Bert W. and Jane, will share photos and reminiscences at the Community Center on Apr.23. Bert and his wife Mary

have been in the Turtle Lake home since 1985, sharing it with the 5<sup>th</sup> and 6<sup>th</sup> generations of the family.---  
*Dr. Bert W. Larson*



Having a good time in Yellowstone Park in 1917 are Dr. Ed Ostergren and wife, Eva, daughter of Olaf Swenson (photo on page 2) and parents of Eva-Jane Larson.

## SHS Heritage Families over the Years

SHS honored its first Heritage Family in 2004, and this year marks its 12th family for community recognition. *Historical ShoreViews* hasn't listed the families for a few years, so here goes:

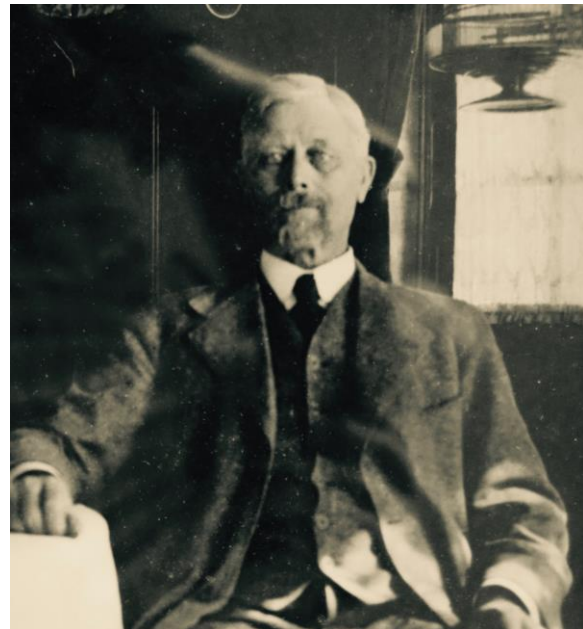
- 2004— Howard and Virginia (Karth) Lundgren
- 2005--- Henry and Henrietta Bucher
- 2006— Hilmer and Gladys Seabloom
- 2007--- Marking Shoreview's 50<sup>th</sup> Year
- 2008— Gust and Anna Larson
- 2009--- John and Magdalena Kurkowski
- 2010--- David and Emile Guerin
- 2011—Thomas and Anna Schifsky
- 2012--- Hugh and Alma Cunningham
- 2013— Lawrence and Michalene Trojanowski
- 2014— Cyril and Agnes DeMars
- 2015— Hans Eric and Louise Nord
- 2016--- Shoreview Historical Society's 25<sup>th</sup> Anniversary
- 2017— Dr. Eva-Jane Ostergren Larson

## Scenes from the Larson's Families' Past



U.S. Navy Lt. (Dr.) Bert R. Larson and Eva-Jane Larson in a 1942 photo, the beginning months of WW II. Bert enlisted after the 1941 Japanese attack on the U.S. at Pearl Harbor and was on active duty for three-and-one half years, including service as a dentist aboard the USS Rixey, a casualty evacuation transport ship that saw action in the South Pacific.

In a 1940s photo below is Olaf Swenson, Eva-Jane's grandfather, then in his 80s. *Photos provided by Dr. Bert W. Larson, Shoreview*



## Author F. Scott Fitzgerald Meet June 25—July 1

A much celebrated event for American fans of author F. Scott Fitzgerald is set for St. Paul in June.



For only the second time in its history, the F. Scott Fitzgerald Society will gather in the author's hometown of St. Paul for a week-long---June 25-July 1 ---celebration of his writing achievements and rise to prominence.

The 14<sup>th</sup> International Society Conference will be hosted by the College St. Scholastica-St. Paul campus, with many events focused on Fitzgerald's old neighborhoods. Born in St. Paul, Fitzgerald spent most of his formative years there. The conference theme---*Was student – am now writer*-- comes from Fitzgerald's military discharge interview, and leads to his rise to become a leading writer in the nation. For registration and other details contact [www.fitzgerald.org](http://www.fitzgerald.org)

## SHS is In the Oral History Business

Part of preserving Shoreview's history is done by talking to and recording the voices of the community's citizens.

SHS's Bob Minton heads up the SHS effort and is always looking for good candidates who have lived for a long period in the city and can provide some perspective on its growth and change through its 60 years. You can contact Bob at [bmint99@gmail.com](mailto:bmint99@gmail.com) if you have suggestions about someone to interview.

**From the president ---continued**

SHS's mission continues to be: Preserve Today's History for Tomorrow. This is *your* history we are talking about ---we want to hear from you with suggestions for displays at the library, with membership program ideas, with stories of your life in Shoreview.



We encourage student members, retirees to become members, and members who may have left our area but want to continue to be informed of their home community. Consider a gift of a membership for someone.

Actually, it's an exciting time to be a SHS member. We have embarked on a series of programs that will be held at the new Shoreview library and will feature speakers, authors, and displays. Members only are invited to a wine and cheese reception in advance of each membership program.

A large selection of framed Shoreview historical photos are planned to be on permanent display at the library. (See story in right column.) These photos depict our area's early years in education, recreation, occupations and transportation.

Many of these photos were donated by our members and featured in our two historical books. Come join us, keep our heart beating stronger.

---Jacci Krebsbach



**SHS Helps with Photo Displays at New Library**

SHS has been working with a community committee in choosing art displays for walls within the new Shoreview library.

SHS President Jacci Krebsbach is on the committee that is reviewing various art treatments for the walls and other locations in the library.

"Perhaps several of the photos we have accumulated in our data base will be considered," she said. The purpose of the historical photos would be to show the growth and change in the community. As the building is a county library, other communities are also involved in the program.

Typical of the photos being reviewed are like the one above, taken by Shoreview's Frank Sandberg when he was a teenager, shows an active Cardigan Station, once used as a train stop enroute to the north and visible in the community.



**Dr. Jeremy Nienow**  
*Talking about centuries past*

**SHS Members Learn of Native American Relics on Lake Vadnais' Shore**

SHS members and others learned about the how, when and why the local North Lake Owasso Neighborhood Group (NLONG) is

so interested in locating Native American artifacts or relics, lying just beneath the surface in undisturbed land in Shoreview and surrounding area.

Dr. Jeremy Nienow entertained SHS members with his historical approach to archaeology, a study of past Minnesota Native American tribes that have left behind evidence of their existence.

"The Native Americans were not unlike the citizens of today---they liked beauty, liked living near water, and were traveling tribes," said Dr. Nienow, a consultant to NLONG in the group's digs at spots on the eastern shore of Lake Vadnais. The group had also done digs near Shoreview lakes.

Participating in a two-year project, Dr. Nienow, a local registered, professional archaeologist,

pointed out the many steps in preparation for a dig, determining the most productive areas after eliminating others through various ground tests.

John Vadnais and Lucena Slaten of Shoreview, are among those spearheading NLONG's activities.

Dr. Nienow's visual pre-



sentation showed some of relic samples that were discovered; primarily, he notes, they would mostly likely would have come from a tribes whose first presence dates back at least 1500

(continued on page 4)

### Archaeology---continued

years in Minnesota. Most relics are found within 50 centimeters in depth, he explained, in rare ground that has escaped earlier excavation.

Finding elements of stone tools or chipped stone artifacts were among NLONG's goals.

To come to a full understanding of what one might discover, the disciplines of anthropology, history and others are necessary in any interpretation, Dr. Nienow cautioned.

Evident from his talk was that work in the archaeological field requires patience, perseverance and a willingness to work in the elements, but it is most uplifting when discoveries are made.

Following his presentation, Dr. Nienow answered numerous questions from an audience of 70-plus in a lively exchange.

The program was one coordinated with Ramsey County through MELSA--- the Metropolitan Library Service Alliance of more than 100 public libraries in the seven-county metro area.

### Fabrics/Fashion---continued

to members at 6:30 p.m.

Jean McElvain, associate curator of the Goldstein Museum of Design, at the University of Minnesota, will be the speaker.

### Newsletter on Line for Members

*Historical ShoreViews* is emailed to all SHS members who provide an email address.

By using that mode, you get the newsletter sooner and in technicolor, and at a postage cost savings to the SHS.

Let us know if you want to receive this newsletter on line. Email to: dhfcvf29@comcast.net. Past issues are maintained on the SHS website.

Don't forget to check out our SHS web site for SHS events [www.shoreviewhistoricalsociety.org](http://www.shoreviewhistoricalsociety.org)

### Spring is Here

#### Check Out the County Tribute Tree Program

Spring is here, and SHS members are reminded of the Ramsey County Tribute Tree program.

SHS has worked with the



county's effort which provides citizens an opportunity to purchase a small tree, and having it placed in a city park of their choice in memory of a friend or loved one.

SHS has itself dedicated trees in Island Lake Park to those who have provided volunteer service to the community. Some 20 communities in the county are active in the program. The trees are picked up and planted by county employees.

For more information on cost and other details check online: [www.friendsofthepark.org](http://www.friendsofthepark.org)

**Historical Shore Views** is published quarterly by the Shoreview Historical Society, 350 W County Rd. 96, Shoreview, MN 55126, (marking 25 years in 2016) for its members and friends. SHS board members are: Carol Gross, Don Follett, Jacci Krebsbach,



Bob Minton, Lucena Slaten, Michelle Reichow, John Vadnais and Pam Videen. To join the

society, contact Pam Videen, 4305 Parkview Court, Vadnais Heights, MN 55127. To contribute items to the newsletter, contact editor Don Follett, Tel: 651-490-7510 email: [DHFCVF29@comcast.net](mailto:DHFCVF29@comcast.net)

### 'If You Don't Know History. . .'

*'If you don't know history, then you don't know anything. You are a leaf that doesn't know it is part of a tree.'* — Michael Crichton, author

## SHOREVIEW HISTORICAL SOCIETY

### MEMBERSHIP DUES OR DUES RENEWAL FORM

Name \_\_\_\_\_

Address \_\_\_\_\_

City, State, Zip \_\_\_\_\_

Telephone \_\_\_\_\_

Email address \_\_\_\_\_

(Please include your email address to receive your newsletter. This is a private list, we do not sell nor distribute.)

#### Dues are:

- Adult \$15 - 3 yrs --- \$38
- Sr. Citizen \$10 - 3 yrs --- \$25
- Student \$10 - 3 yrs --- \$25
- Family \$18 - 3 yrs --- \$45

Add \$2 to cover postage for mailing the newsletter, if you don't include an email address

Total amount \$ \_\_\_\_\_

**Additional tax deductible donations are welcome.**

Please make your check out to: Shoreview Historical Society, and mail to Pam Videen, 4305 Parkview Ct., Vadnais Heights, MN 55127.

**A Historical ShoreViews subscription is included in dues.**

*The Shoreview Historical Society was born in 1991 when a group of residents took an interest in preserving and recording both the important and informal events in the city, and those that told of our city's growth and the deeds of our people. Since its inception, the society has worked to fulfill that mission. If you are interested in participating, please give any director a call.*

### Dues for 2017

To help keep our membership living and growing---to those SHS members who pay annually your dues are late, but always accepted by your friendly treasurer. SHS's operations depend upon your participation---and financial help. Hoping you send your check along today. Thank you.